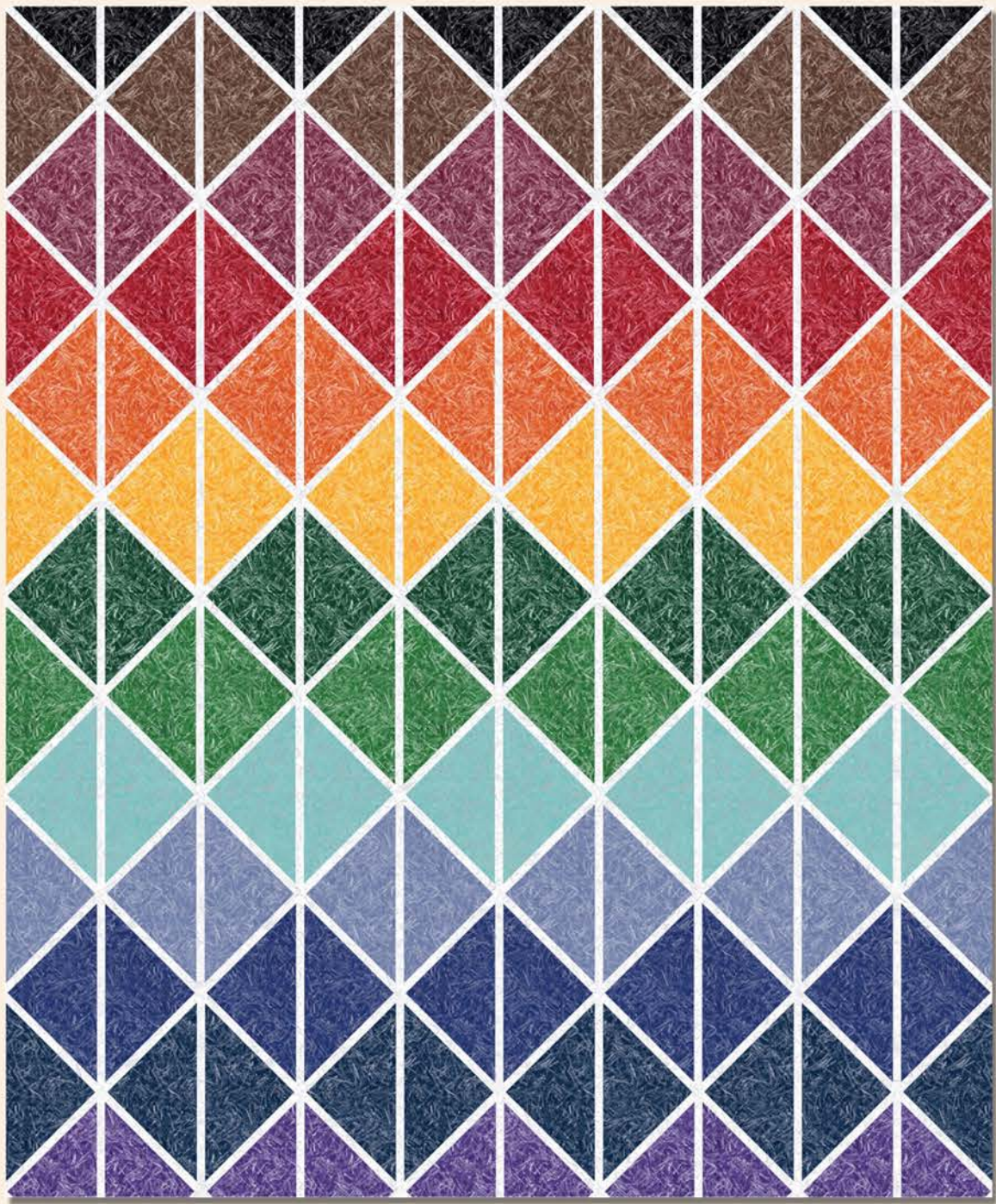








# Deltille Quilt

Designed by Julie Burton - Running Stitch Quilts



Finished Size: 57" x 68" (1.45m x 1.73m)  
Technique: Pieced  
Pattern available at [www.runningstitchquilts.com](http://www.runningstitchquilts.com)

Deltille Quilt Ordering Guide					
SKU		Yards	Meters	6 Kits	12 Kits
	3477-02P	1 3/4 yds	1.60m	1 bolt	2 bolts
	3477-12P	1/4 yds	0.23m	1 bolt	1 bolt
	3477-33P	1/4 yds	0.23m	1 bolt	1 bolt
	3477-39P	1/4 yds	0.23m	1 bolt	1 bolt
	3477-44P	1/4 yds	0.23m	1 bolt	1 bolt
	3477-50P	1/4 yds	0.23m	1 bolt	1 bolt
	3477-55P	1/4 yds	0.23m	1 bolt	1 bolt
	3477-62P	1/4 yds	0.23m	1 bolt	1 bolt
	3477-66P	1/4 yds	0.23m	1 bolt	1 bolt
	3477-72P	1/4 yds	0.23m	1 bolt	1 bolt
	3477-77P	1/4 yds	0.23m	1 bolt	1 bolt
	3477-79P	1/4 yds	0.23m	1 bolt	1 bolt
	3477-88P	1/4 yds	0.23m	1 bolt	1 bolt
	3477-99P*	7/8 yds	0.80m	1 bolt	1 bolt
Backing Fabric Option					
3477-62P		4 yds	3.66m	3 bolts	5 bolts
* Indicates binding fabric. FQ = 18" x 22" (0.45m x 0.55m) All fabric quantities are based on 12yd bolts unless otherwise indicated.					

Mountain Valley Quilt Ordering Guide					
SKU		Yards	Meters	6 Kits	12 Kits
	3477-33P	1 yds	0.91m	1 bolt	2 bolts
	3477-41P	1 2/3 yds	1.52m	1 bolt	2 bolts
	3477-44P	1 yd	0.91m	1 bolt	2 bolts
	3477-50P	1 yd	0.91m	1 bolt	2 bolts
	3477-79P*	2 1/4 yds	2.06m	2 bolts	3 bolts
	3477-99P	1 1/4 yds	1.14m	1 bolt	2 bolts
Backing Fabric Option					
3477-79P		4 yds	3.66m	3 bolts	5 bolts
* Indicates binding fabric. FQ = 18" x 22" (0.45m x 0.55m) All fabric quantities are based on 12yd bolts unless otherwise indicated.					

Quilt Image on Front Page